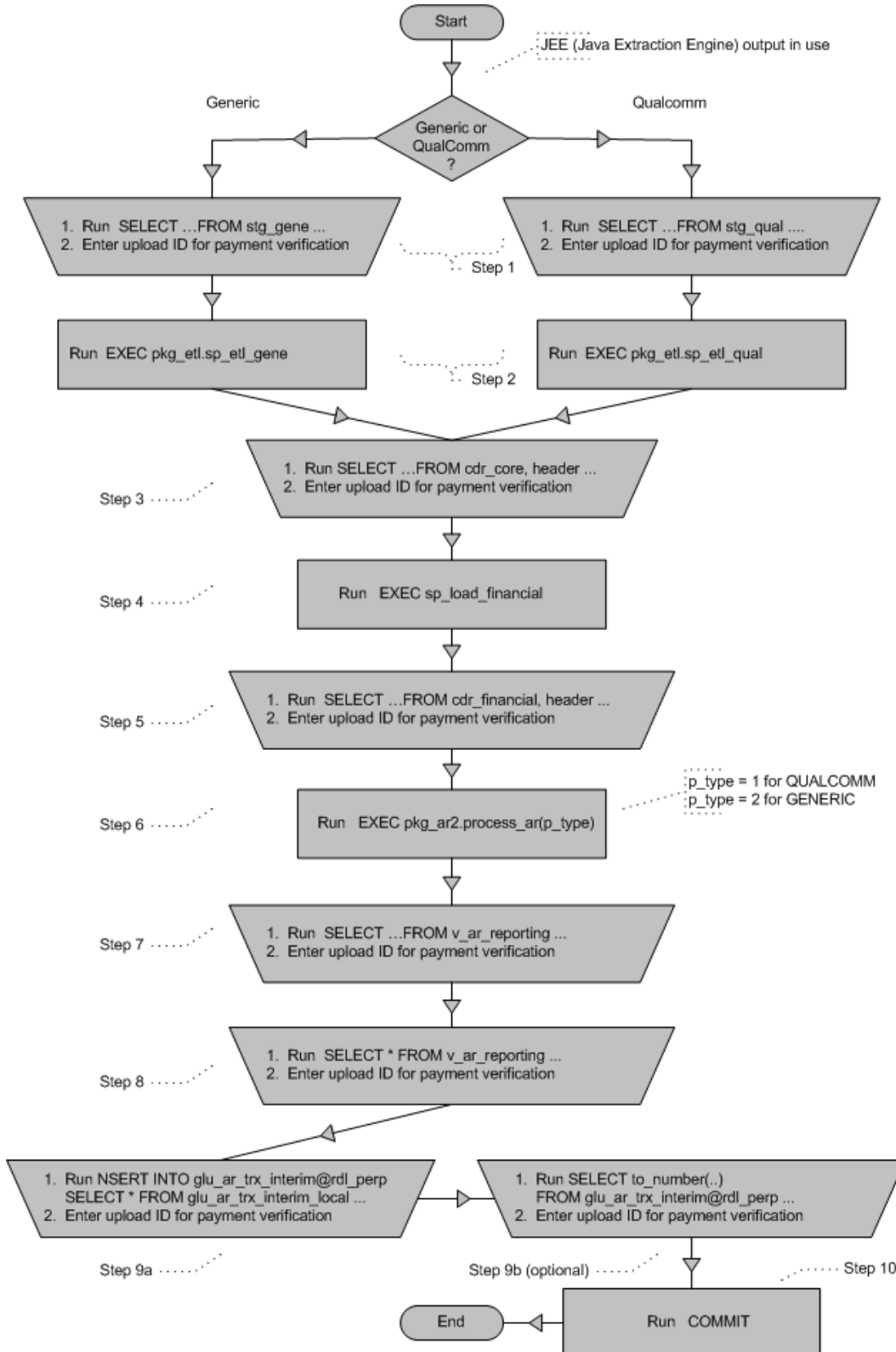


Upload Process Performance and Verification

The flowchart that follows provides a graphical description of how the revenue upload process is performed and verified by an operator.



Explanations to the flowchart**Step 1: Verifying gross revenue****Case A:** QUALCOMM template in use

```
COL GROSSREV FOR 999,999,999.99
COL NETAMT FOR 999,999,999.99
SELECT COUNT(*), SUM(TO_NUMBER(REPLACE(GROSSDEVELOPERREV,',',''))) GROSSREV,
       SUM(TO_NUMBER(REPLACE(NETAMOUNTBILLED,',',''))) NETAMT,
       SUM(TO_NUMBER(REPLACE(ADJUSTMENTS,',',''))) ADJ,
       SUM(TO_NUMBER(REPLACE(BILLABLECOUNT,',',''))) BILLCOUNT,
       SUM(TO_NUMBER(REPLACE(ADJCOUNT,',',''))) ADJCOUNT
FROM STG_QUAL WHERE UPLOADID=&UPLOADED;
```

Case B: Generic template in use

```
#STEP - 1B (conditionally required) This script is for GENERIC load
SELECT COUNT(*), SUM(TO_NUMBER(REPLACE(REVSHAREAMT,',',''))) AMT,
       SUM(TO_NUMBER(REPLACE(UNITS,',',''))) UNITS
FROM STG_GENE WHERE UPLOADID=&UPLOADED;
```

Step 2: Inserting data into tables HEADER and CDR_CORE**Case A:** QUALCOMM revenue data in use

```
EXEC PKG_QUAL.SP_ETL_QUAL;
```

Case B: GENERIC revenue data in use

```
EXEC PKG_ETL.SP_ETL_GENE;
```

Step 3: Checking the update of tables HEADER and CDR_CORE

```
SELECT 'CORE' DESCR, COUNT(*), COUNT(DISTINCT H.HEADER_ID), UPLOADID,
       SUM(REVSHARE_IC) REV_IC, SUM(REVSHARE_RC) REVSHARE_RC, SUM(UNITS)
FROM CDR_CORE C, HEADER H
WHERE C.HEADER_ID = H.HEADER_ID AND UPLOADID >= &UPLOADID
GROUP BY UPLOADED;
```

Step 4: Inserting data into tables CDR_FINANCIAL and FUDGE

```
EXEC SP_LOAD_FINANCIAL;
```

Step 5: Checking the update of table CDR_FINANCIAL

```
SELECT 'FINANCIAL' DESCR, COUNT(*), COUNT(DISTINCT H.HEADER_ID), UPLOADID,
       SUM(REVSHARE_IC) REVSHARE_IC, SUM(REVSHARE_RC) REVSHARE_RC, SUM(UNITS)
FROM CDR_FINANCIAL F, HEADER H
WHERE F.HEADER_ID = H.HEADER_ID AND UPLOADID >= &UPLOADID
GROUP BY UPLOADED;
```

Step 6: Submitting data to PRE-AR or Future

```
EXEC PKG_AR2.PROCESS_AR(P_TYPE);
```

Note: The information in this section has been abridged.

CDR_CORE

Table Summary:

The Customer Download Repository Core table stores PO (Purchase Order) line level information.

Structure:

Column	Data Type	Null	Description
PURCHASETYPEID	VARCHAR2(8)		Account segment for forming GL_CODE_COMBINATION in AR
UNITS	NUMBER		Quantity ordered
REVENUE	NUMBER(10,2)		Revenue
REVSHARE_IC	NUMBER(10,2)		Revenue in invoice currency
ITEM_NO	VARCHAR2(40)		Item number from ERP (foreign key). Its value is ITEM_NO.MV_ERP_ITEMS.
PO_NO	VARCHAR2(20)		Customer's purchase order number.
CDR_CORE_ID	NUMBER	Not	CDR_CORE_SEQ.NEXTVAL. See "Associated Sequence" below.
HEADER_ID	NUMBER		HEADER_ID.HEADER (foreign key)

Constraints:

Constraint	Type	Column	Referenced Table	Referenced Constraint
FK_HEADER_ID	FK	HEADER_ID	SDB30.HEADER	SYS_C0024544
PK_CDR_CORE	PK	CDR_CORE_ID		
SYS_C0024502	C	CDR_CORE_ID		

Details on Check Constraints:

Constraint	Check Condition
SYS_C0024502	"CDR_CORE_ID" IS NOT NULL

Indexes:

Index Name	Index Type	Columns in Use
PK_CDR_CORE	Unique NORMAL	CDR_CORE_ID

Associated Triggers:

Trigger Name	Trigger Type	Triggering Event
CDR_CORE_INSERT_TRG	BEFORE EACH ROW	INSERT

Associated Sequence:

Sequence Name	Starts with	Increment	Max Number	Can be cycled?
SEQ_CDR_CORE	1	1	unlimited	No

MV_ERP_TRX_TYPES

Materialized View Summary:

This view provides transaction type information queried from Oracle ERP.

Definition:

Select Statement
<pre> SELECT "GLU_TRX_TYPES_V"."TRX_TYPE_ID" "TRX_TYPE_ID","GLU_TRX_TYPES_V"."TRX_TYPE" "TRX_TYPE","GLU_TRX_TYPES_V"."DESCRIPTION" "DESCRIPTION","GLU_TRX_TYPES_V"."TYPE" "TYPE","GLU_TRX_TYPES_V"."COMPANY" "COMPANY","GLU_TRX_TYPES_V"."ACCOUNT" "ACCOUNT","GLU_TRX_TYPES_V"."DEPARTMENT" "DEPARTMENT","GLU_TRX_TYPES_V"."COUNTRY" "COUNTRY","GLU_TRX_TYPES_V"."PRODUCT_NUMBER" "PRODUCT_NUMBER","GLU_TRX_TYPES_V"."PRODUCT_CATEGORY" "PRODUCT_CATEGORY","GLU_TRX_TYPES_V"."INTERCOMPANY" "INTERCOMPANY","GLU_TRX_TYPES_V"."FUTURE1" "FUTURE1","GLU_TRX_TYPES_V"."FUTURE2" "FUTURE2","GLU_TRX_TYPES_V"."ORG_ID" "ORG_ID" FROM "GLU_TRX_TYPES_V"@PAAIAI.US.ORACLE.COM "GLU_TRX_TYPES_V" </pre>

Features:

Refresh	Mode	Updatable
DEMAND	FORCE	Not

Structure:

Column	Data Type	Null	Description
TRX_TYPE_ID	NUMBER(15,0)	Not	Transaction type ID
TRX_TYPE	VARCHAR2(20)		Transaction type
DESCRIPTION	VARCHAR2(80)		Transaction description
TYPE	VARCHAR2(20)		Query type
COMPANY	VARCHAR2(25)		Company name
ACCOUNT	VARCHAR2(25)		Account
DEPARTMENT	VARCHAR2(25)		Department name
COUNTRY	VARCHAR2(25)		Country
PRODUCT_NUMBER	VARCHAR2(25)		Product number
PRODUCT_CATEGORY	VARCHAR2(25)		Product name
INTERCOMPANY	VARCHAR2(25)		Intermediate company
FUTURE1	VARCHAR2(25)		Reserved
FUTURE2	VARCHAR2(25)		Reserved
ORG_ID	NUMBER(15,0)		Organization ID

Constraints:

Constraint	Type	Column	Referenced Table	Referenced Constraint
SYS_C0024706	C	TRX_TYPE_ID		

Details on Check Constraints:

Constraint	Check Condition
SYS_C0024706	"TRX_TYPE_ID" IS NOT NULL

Indexes:

Index Name	Index Type	Columns in Use
I_SNAP\$ MV_ERP_TRX_TYPES	Unique NORMAL	M_ROW\$\$

Associated Triggers:

N/A